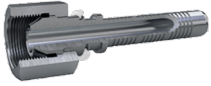




SOA - F-BSPP VHP C

VHP STRAIGHT FEMALE BSPP 60° - 700 bar



Carbon steel Part no	AISI 316L part no	Description	Minimum pack quantity	Hose size	Thread F		
SOA120	SOA820	1/4 F-BSPP VHP C 1/8	20	DN4	1/8	19	1/4 "
SOA121	SOA821	1/4 F-BSPP VHP C 3/16	20	DN5	3/16	19	1/4 "
SOA122	SOA822	1/4 F-BSPP VHP C 1/4	20	DN6	1/4	19	1/4 "
SOA143		3/8 F-BSPP VHP C 5/16	20	DN8	5/16	19	3/8 "
SOA144	SOA844	3/8 F-BSPP VHP C 3/8	20	DN10	3/8	19	3/8 "
SOA155	SOA855	1/2 F-BSPP VHP C 1/2	20	DN12	1/2	14	1/2 "
SOA176	SOA876	3/4 F-BSPP VHP C 5/8	2	DN16	5/8	14	3/4 "
SOA177	SOA877	3/4 F-BSPP VHP C 3/4	2	DN20	3/4	14	3/4 "
SOA187		1 F-BSPP VHP C 3/4	2	DN20	3/4	11	1 "
SOA188	SOA888	1 F-BSPP VHP C 1	2	DN25	1	11	1 "
SOA198		1+1/4 F-BSPP VHP C 1	2	DN25	1	11	1+1/4 "

Dimensions and values shown may be changed without prior notice to improve product performances and reliability.

Transfer Oil S.p.A. assumes no liability on mistakes nor errors appearing in this spec sheet.

Document date: 08/04/2026

www.transferoil.com